

**BOUT**  
Solutions

# Bout Solutions ScanSystems

To optimize your warehouse operations



# Our product

- Base connection box

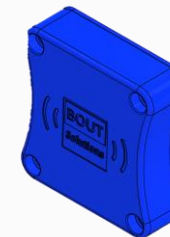
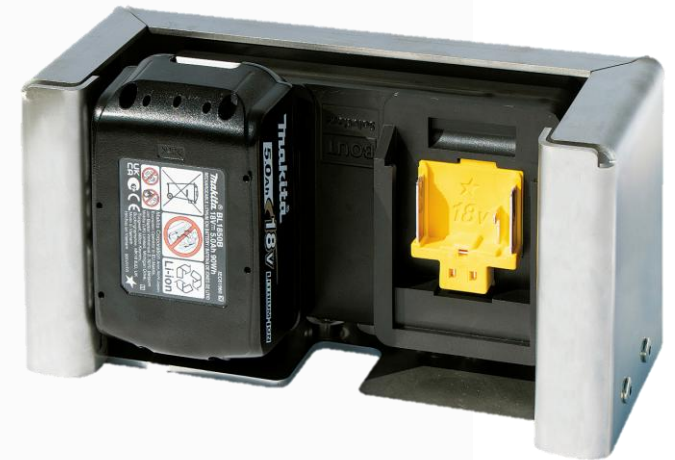
- Battery powered
- External powered

- Button box

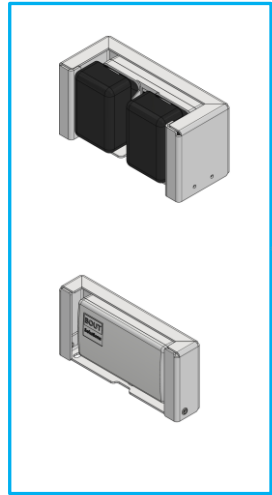
- USB-C
- USB-A

- Possibilities

- Barcode scanning 1D/2D
- RFID



# Standard Solutions



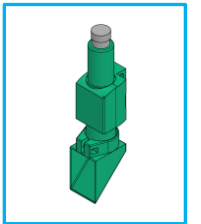
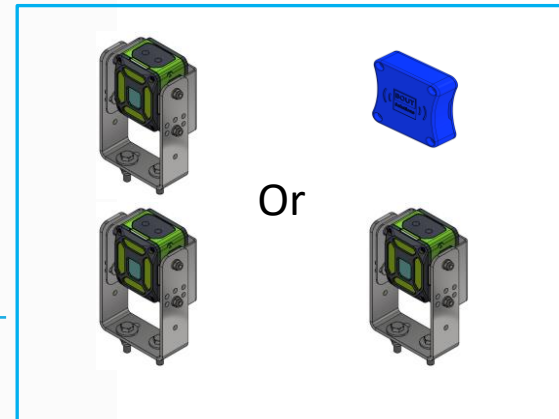
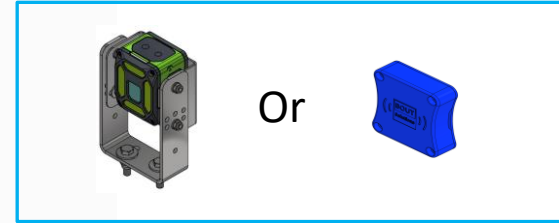
With one button it is possible to control one component



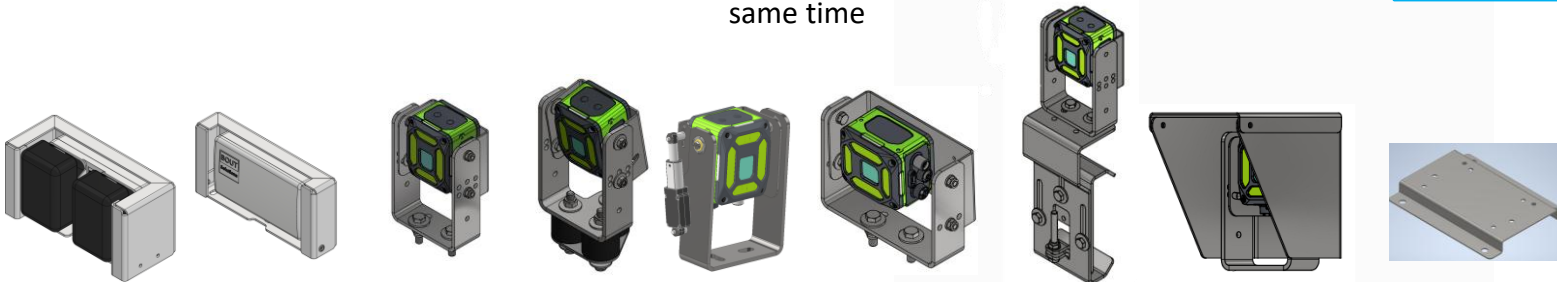
With two buttons it is possible to control one or two components



With three buttons it is possible to control one or two components or everything at the same time

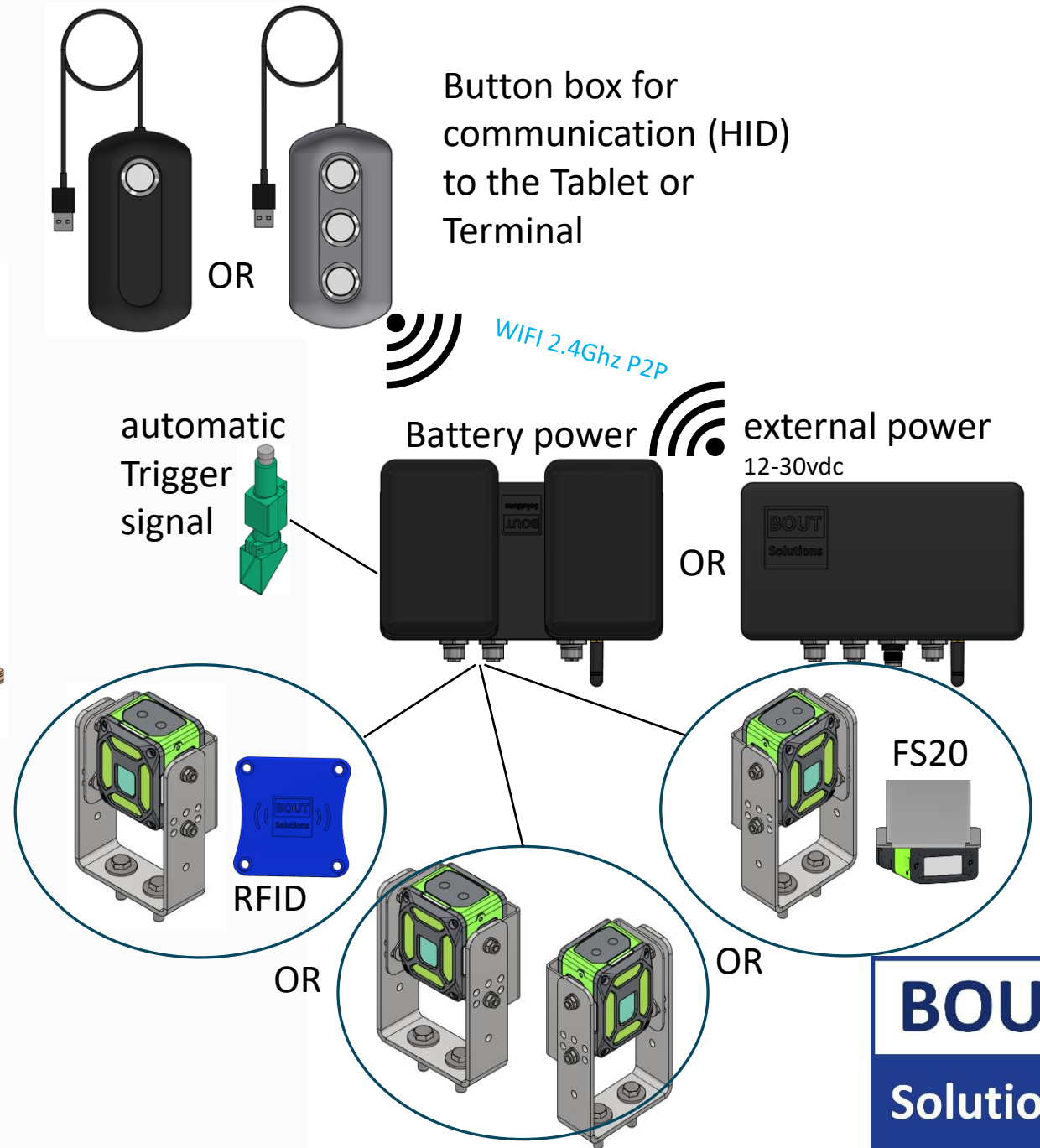
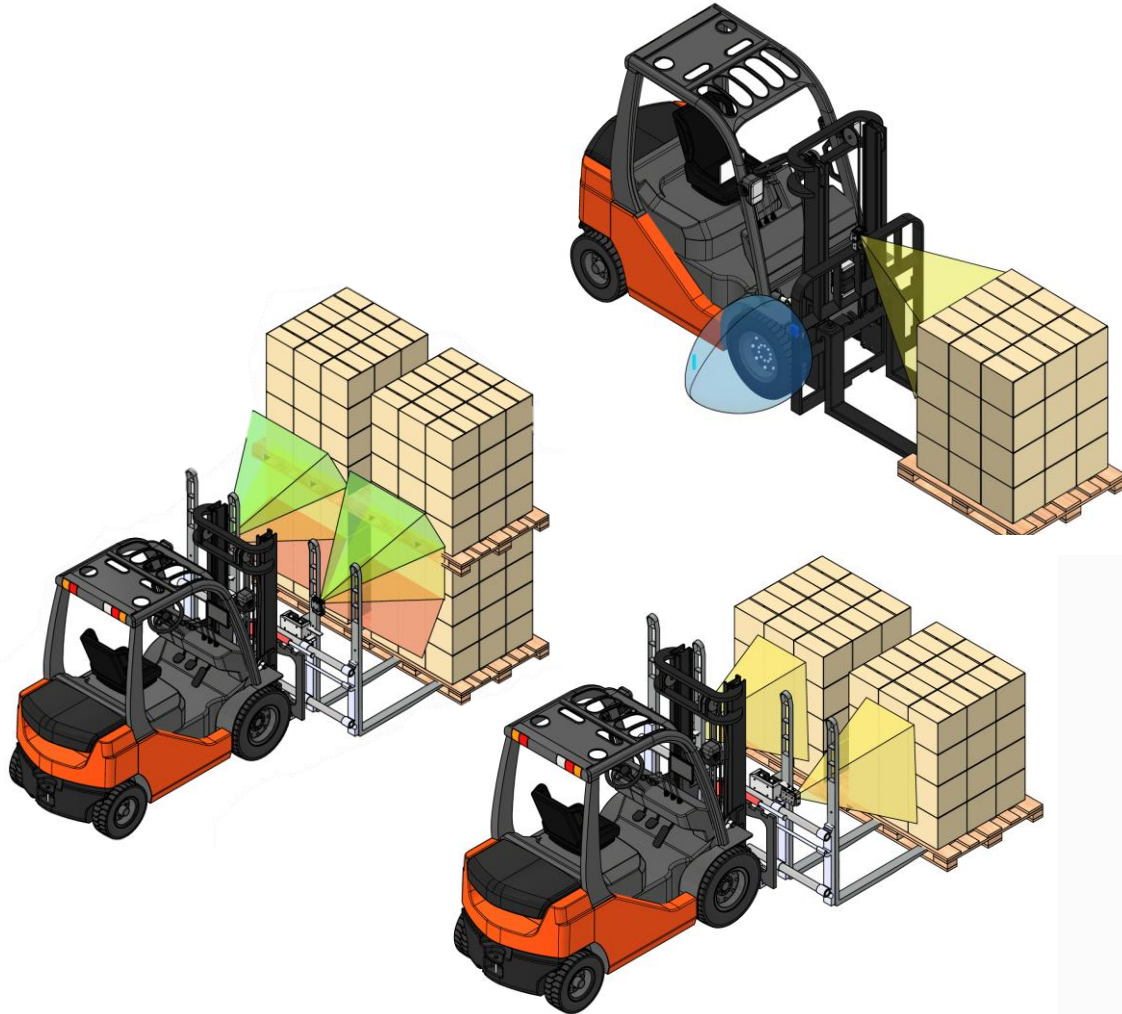


Optie automatic Trigger signal

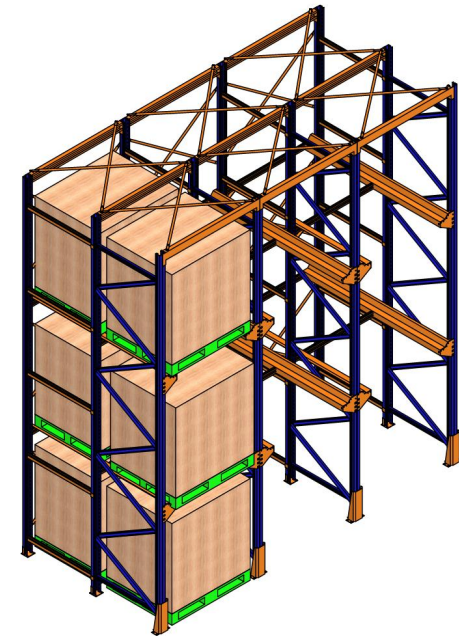
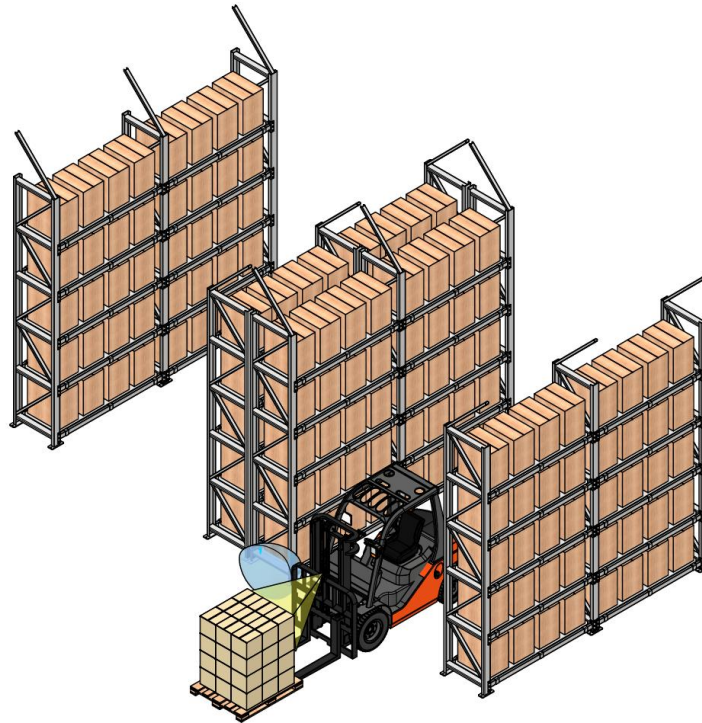
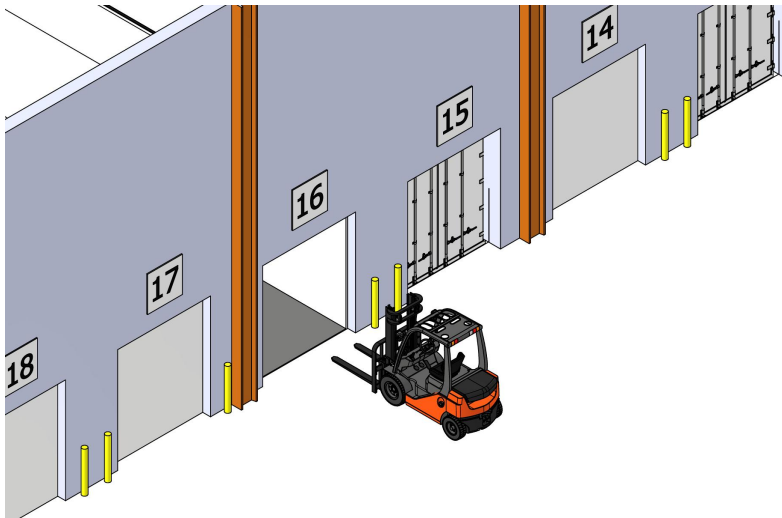




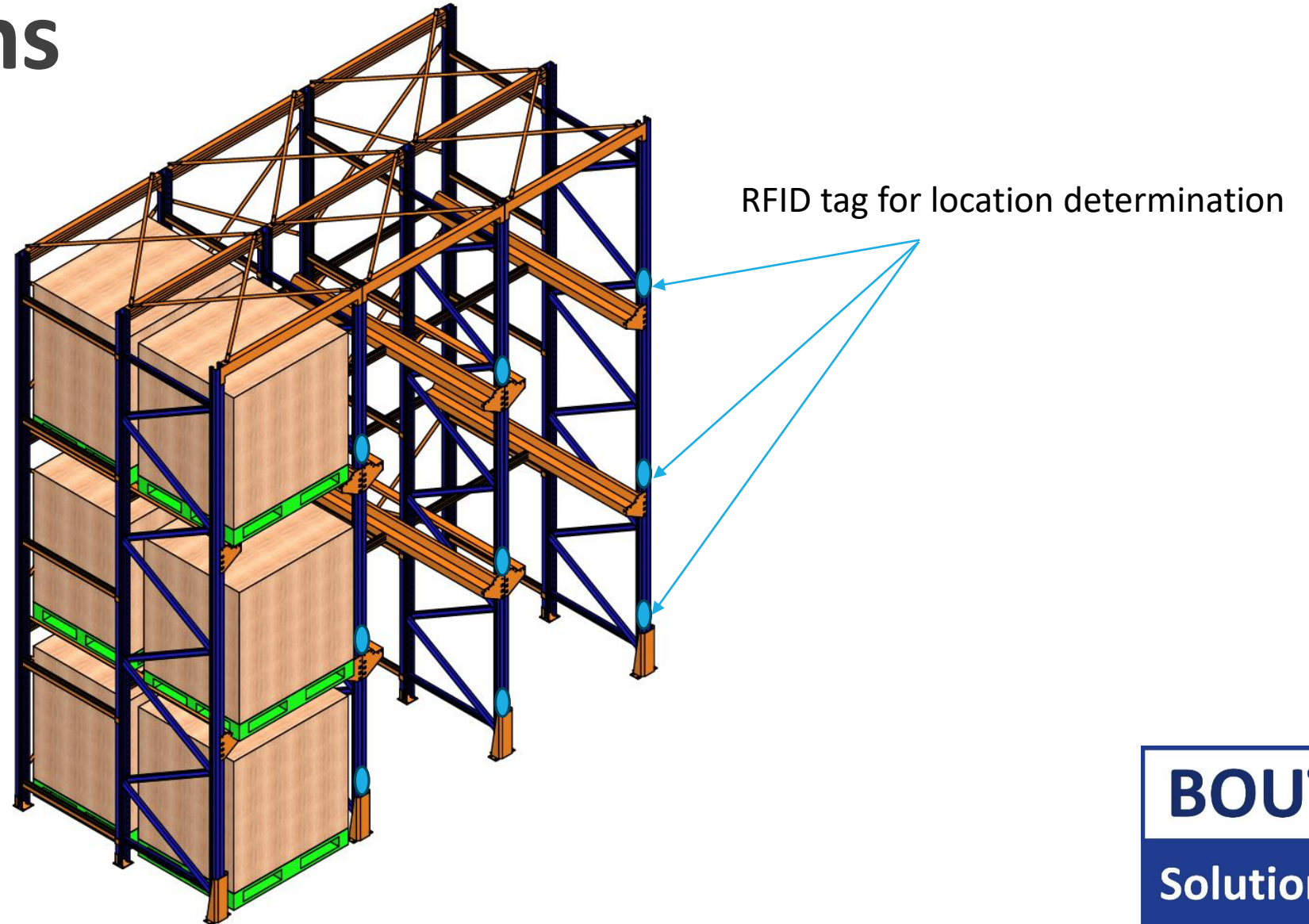
# What is possible



# Our applications



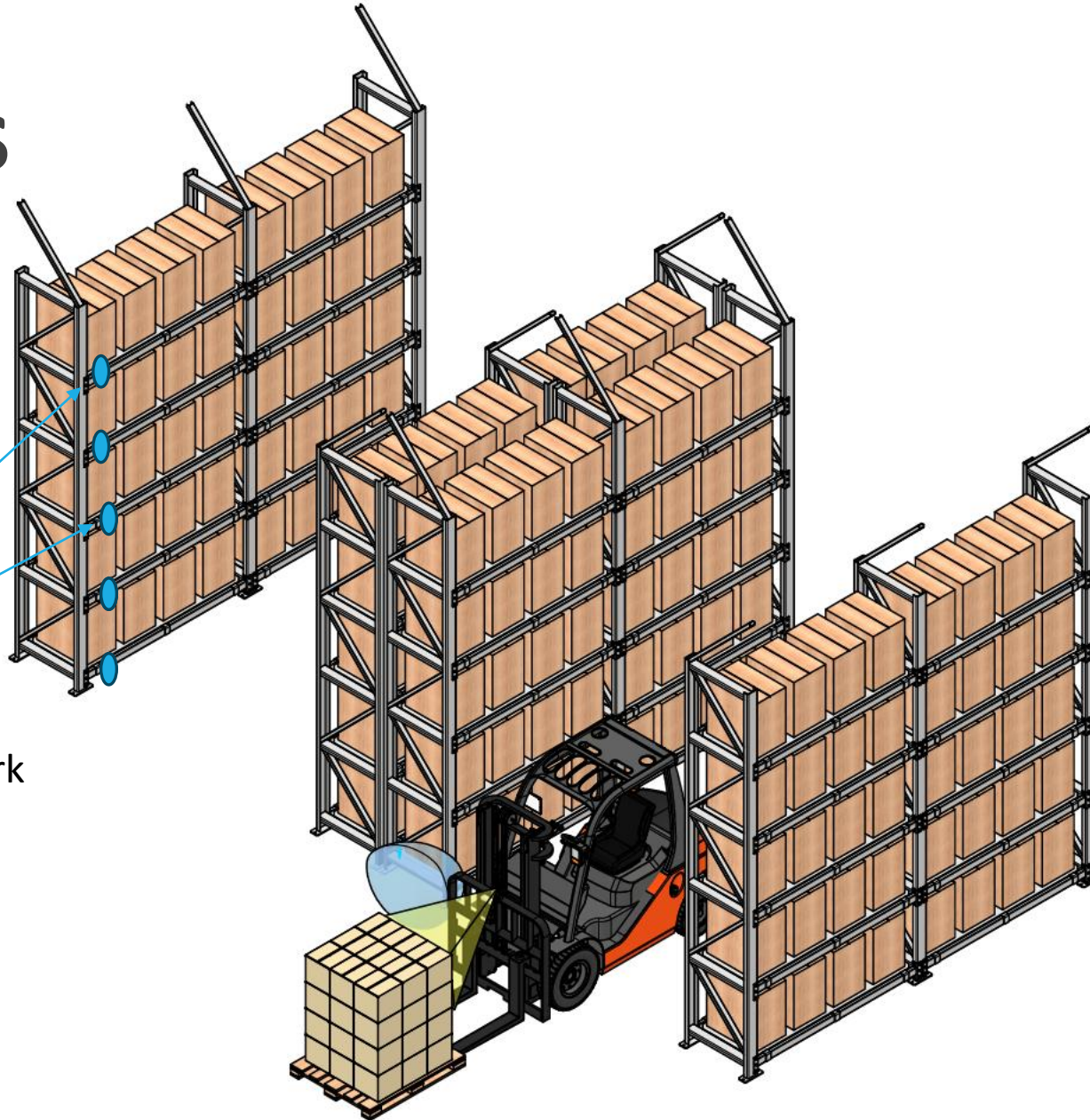
# Applications



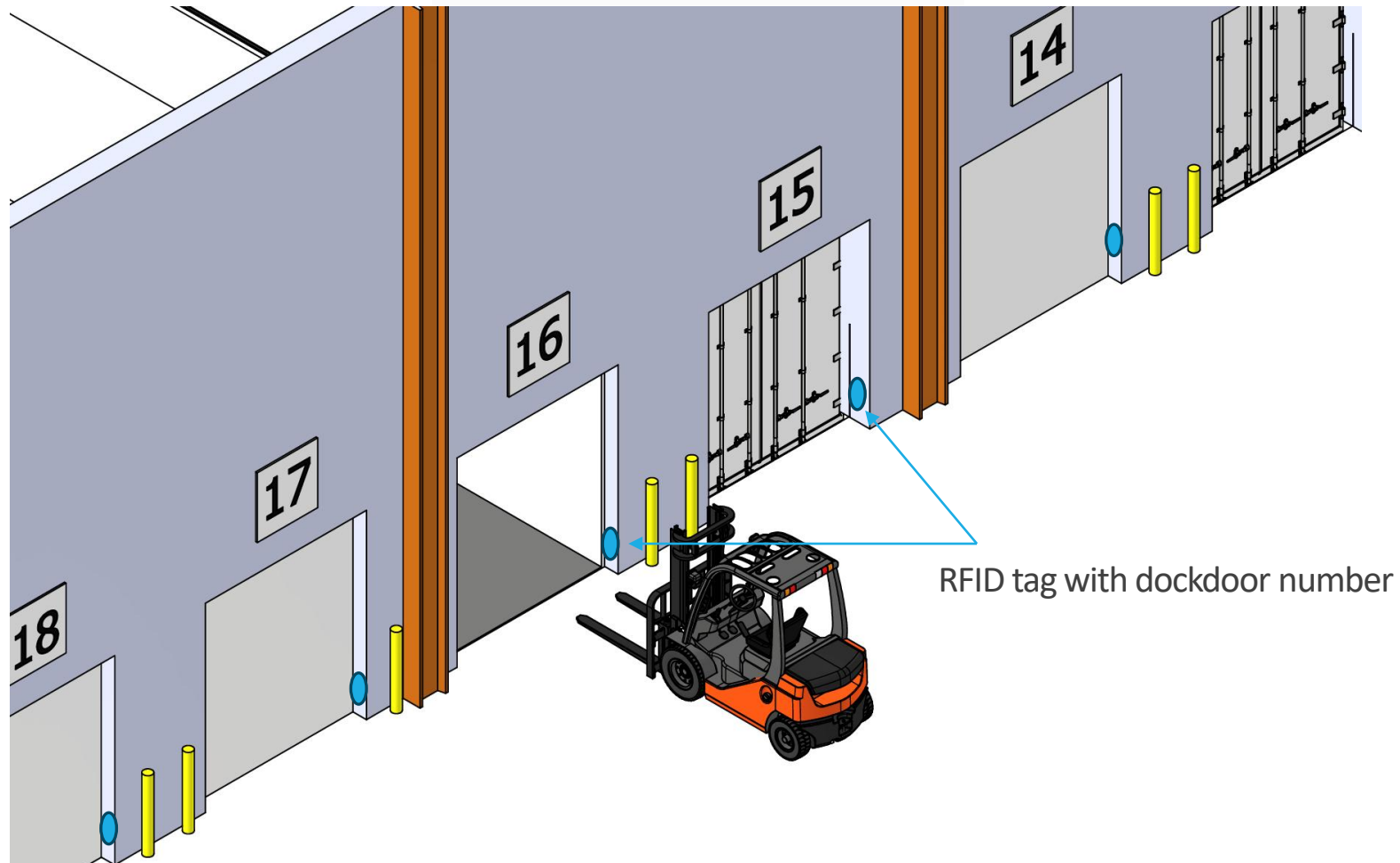


# Applications

With these racks it is possible to work with RFID, Barcode or QR code for location determination.



# Applications





# Applications

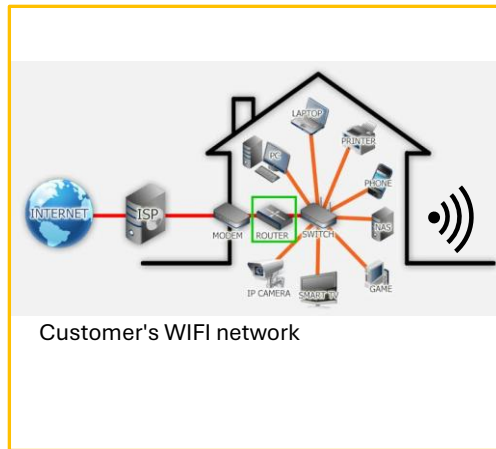


# Our customers and partners

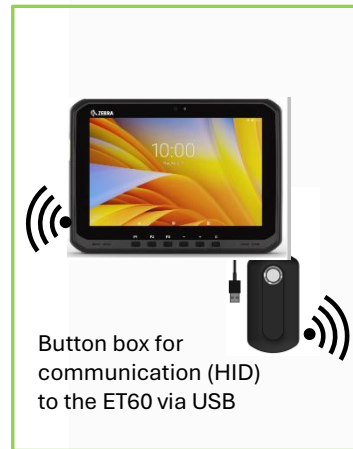
we deliver more than 300+ systems worldwide



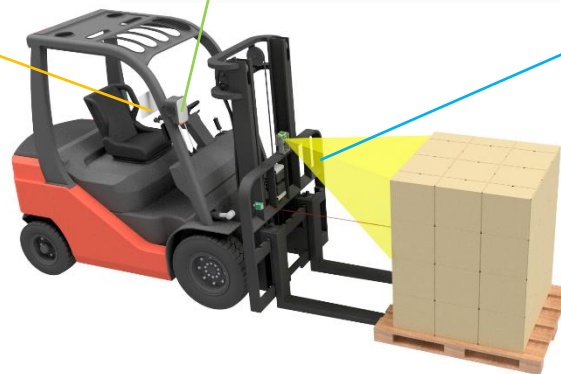
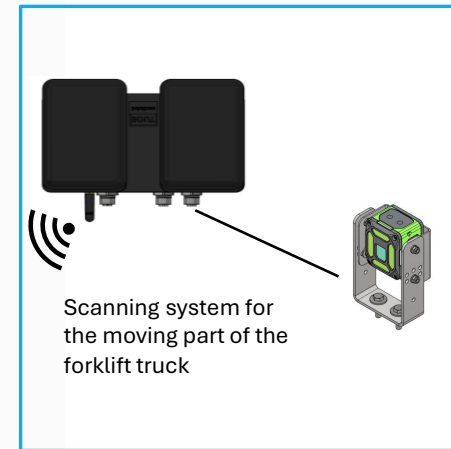
# Technical Explanation



ET60 communicates with the customer's network via WiFi 2.4 or 5 GHz

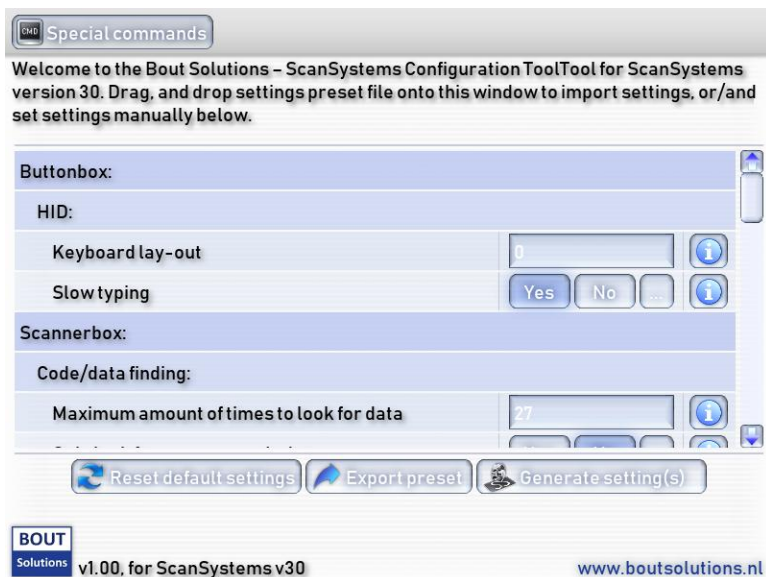


WiFi 2.4GHz P2P  
A closed network





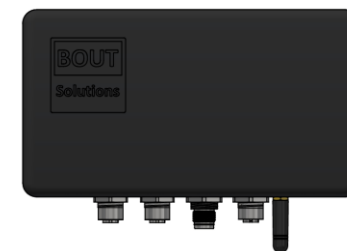
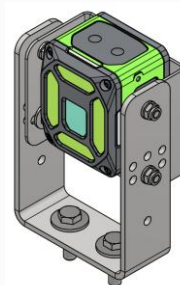
# QR Configurator v30



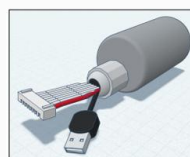
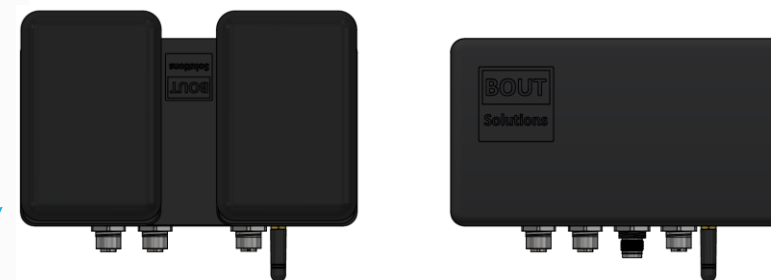
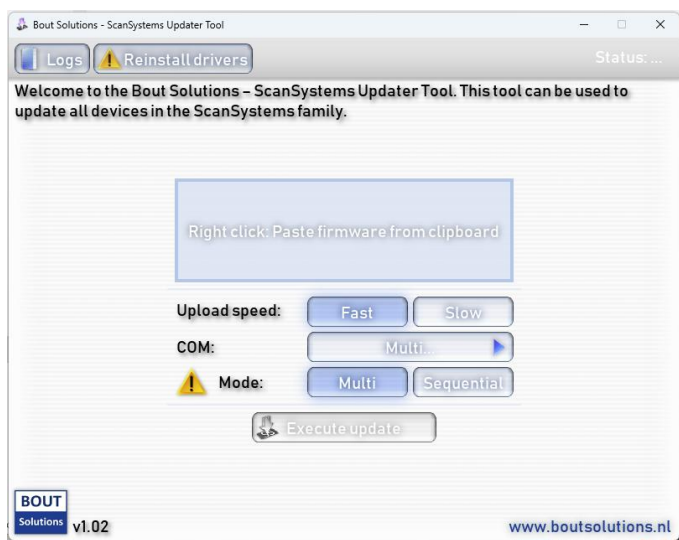
In a web portal, we select the functions we need.

A QR code is generated from these settings.

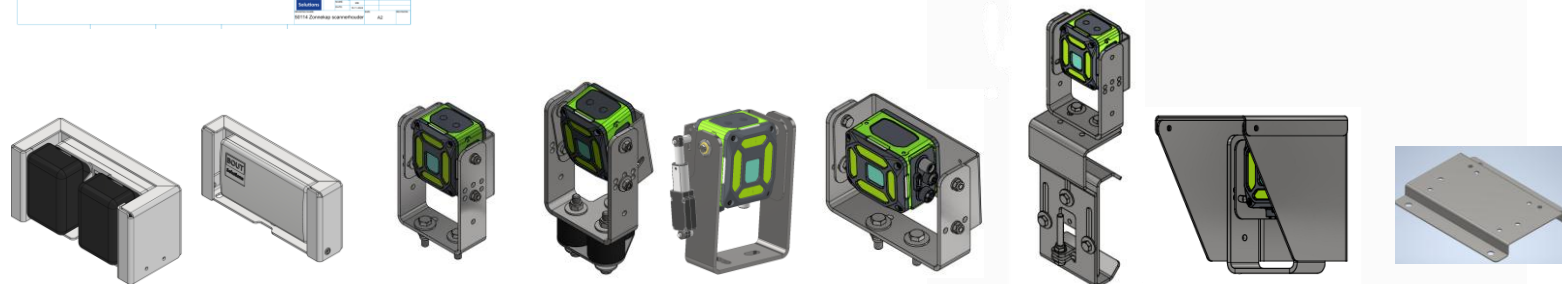
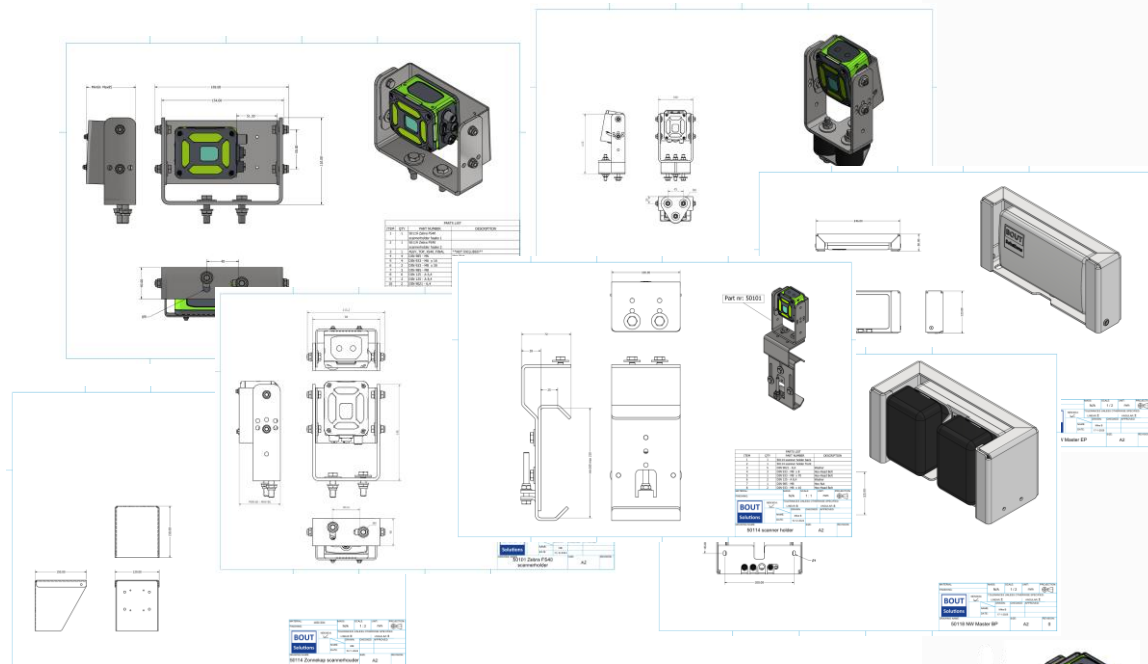
We can use this to configure the scanning system..



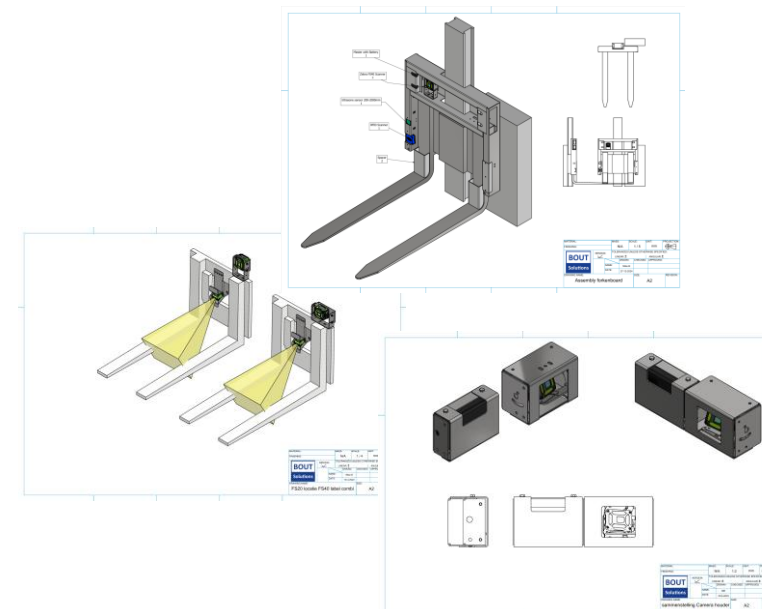
# Updater Tool



# Mounting hardware



Standard equipment



Customer-specific engineered equipment



# Cable between ScanSystem and Scanner

We have a variety of cables with different options



Cable length in stock

1 m  
2 m  
4 m  
10 m



1 m



1 m



Spiral cable:  
Length 250 - 350 to 1200 – 450mm

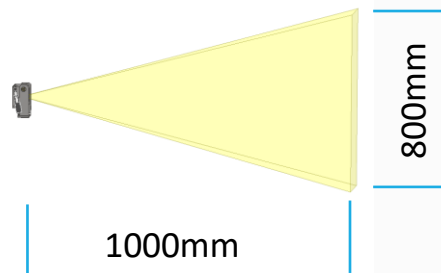
# Gimbal scannerholder FS4x NEW



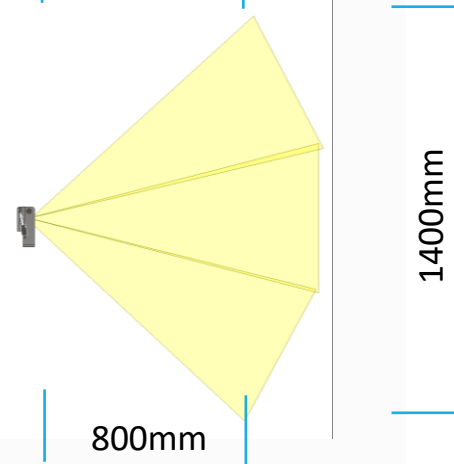
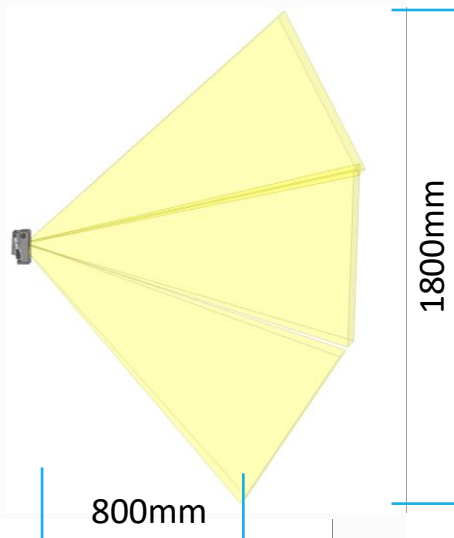
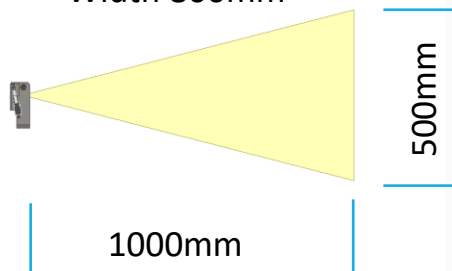
This example uses an FS40



Width 500mm



Width 800mm



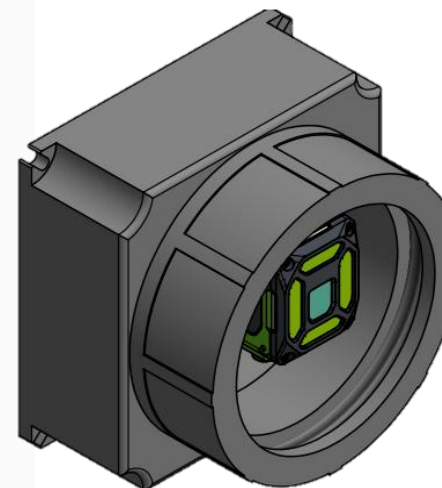
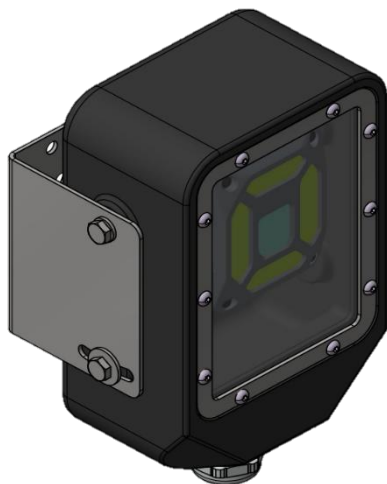
1.0 Sec

There are two connection methods:  
directly to the scanner (e.g., for lighting) or  
through the scansystem.

# Enclosure

We offer various enclosures for the FS20 – FS 4X series:

- Waterproof (IP68)
- Heated
- ATEX Zone I–II compliant





# Thank you

If you have any questions, please  
contact your local dealer or  
[info@boutsolutions.nl](mailto:info@boutsolutions.nl)

Bout Solutions B.V.

Röntgenstraat 14  
4416DP Kruiningen

[Info@boutsolutions.nl](mailto:Info@boutsolutions.nl)  
06-14661632

Mike Bouterse



[Forklift Ready Solutions Video](#)